

# PARTICIPATORY RESEARCH METHODOLOGY

## AND ITS INTERSECTION WITH SOCIAL WORK, SPECIAL EDUCATION SERVICES, AND RESILIENCE

Assignment 2: Paradigmatic Frameworks Visual Map  
TSD 8215: Varieties of Scholarly Experience with Dr. May Elawar, Ph.D.

Jacob Campbell, LICSW

Advancement of Scientific Knowledge Base

Social Action and Change Making for Co-Researchers

## DUAL FOCUS OF PARTICIPATORY RESEARCH

(Bergold & Thomas, 2012; Cochran et al., 2008)



Degree of Participation

### COMPONENTS OF PARTICIPATORY RESEARCH

(Bergold & Thomas, 2012)



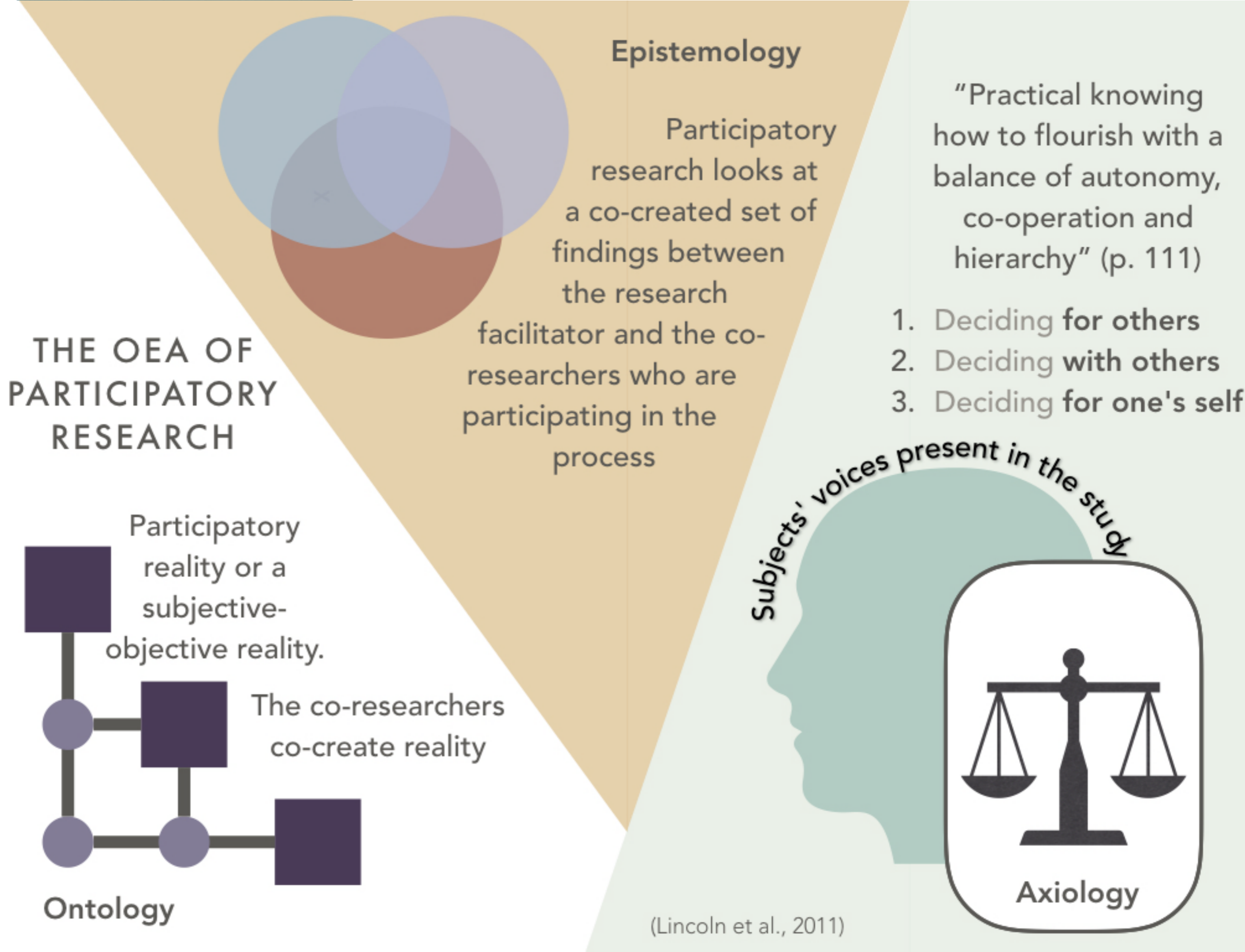
Democracy as a Precondition



The Need for a "Safe Space"



Definition of Community



## THE INTERSECTION OF SOCIAL WORK VALUES AND PARTICIPATORY RESEARCH

Social Worker Core Values	Connections with Participatory Research
Service	Focus on both serving science (though advancing scientific understanding) and serving the co-researchers through attempting to improve
Social justice	Leads to action in the service of human flourishing through a transformation in the world
Dignity and worth of a person	Open and accepting attitudes Democratic nature of these types of group
Importance of human relationships	Focus on participants as co-researchers verses typical researcher and subject relationship
Integrity	Reflecting co-researchers viewpoints accurately
Competency	Components needed for the development the group

(NASW, 2017)

(Lincoln et al., 2011; Bergold & Thomas, 2012)